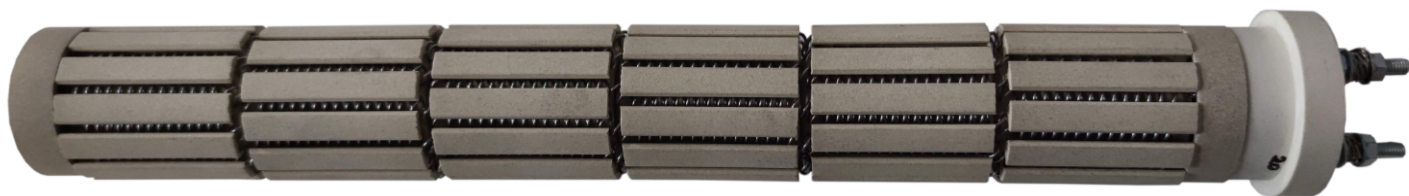


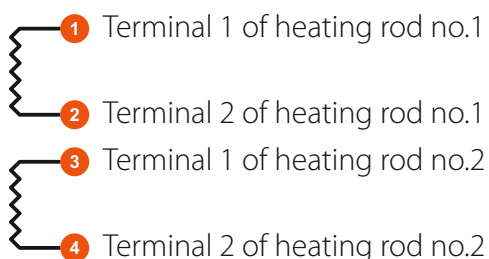
DUAL HEATING ELEMENT

For photovoltaic applications



Heating element consist of two U-shaped heating rods. Heating element is designed for heating of water or similar liquids. AC section of the heating element is designed for power 2200W / 230VAC and DC section for power 2500W / 230VDC.

WIRING



DESCRIPTION

- AC / DC „dry” heating element ■
- Independent two heating sections ■
- Connected via M4 threads ■
- Intended for heating liquids ■

APPLICATIONS

- Systems for photovoltaic water heating ■
- Other applications with DC voltage ■

SPECIFICATIONS

AC

- Power 2 200 W ■
- Resistivity 24 Ω / section ■
- Voltage 230 VAC ■

DC

- Power 2 500 W ■
- Resistivity 21 Ω / section ■
- Voltage 230 VDC ■

- Length 420mm ■
- Diameter 60 / 45mm ■

UNITES Systems a.s. Tel.: +420 571 757 230
Kpt. Macha 1372 E-mail: info@unites.cz
Valašské Meziříčí www.unites-systems.com
Czech Republic www.solar-kerberos.com

Innovative energy
saving solutions

